

## Bae Joonsung

### The Costume of Painter – Still Life

28 October – 20 November 2016

Opening reception 27 October | 6–8 pm

**Bae Joonsung was born in Gwangju, South Korea in 1967 and trained at the College of Fine Arts, Seoul National University, graduating as 'Master of Fine Art' in 2000. He has shown extensively in Korea and Europe, having an impressive curriculum vitae of solo and group exhibitions. The Pontone Gallery is exhibiting his new 'lenticular' paintings, which are shown exclusively, and for the first time, in London.**

His is a sophisticated and complex process of image making. The artist's subjects are carefully painted, then these paintings are photographed and combined into a 'lenticular' print, which allows another image to be revealed as the viewer changes their angle of vision. Important to this process is the 'layering' of imagery, that is, an idea of a painting within a painting; alternative versions of a painting can exist within the same surface.

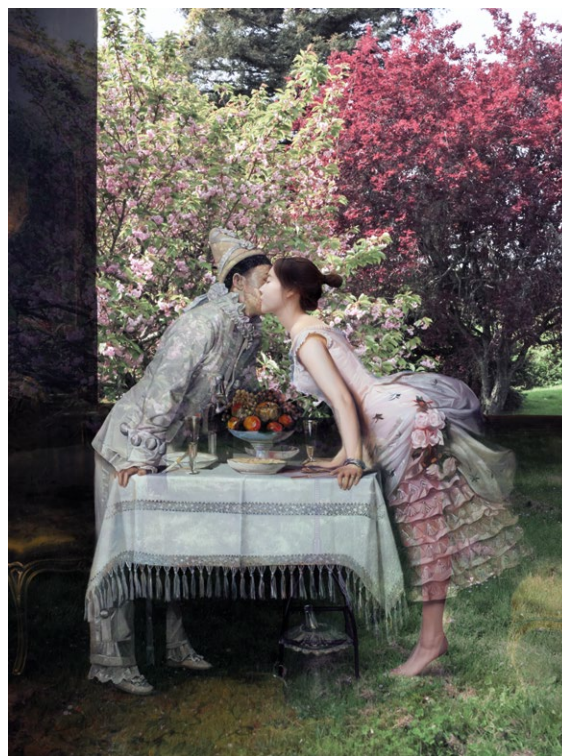
These new works feature figures in interiors, sporting scenes and still-lives. Some are paintings with a lenticular insert, others are entirely lenticular panels. What is common to all is the alternative readings allowed by the process. They are skilfully executed in a technique which brings to mind nineteenth century, western 'romantic' painting, eliciting overt references to Millais, Alma-Tadema and Ingres. Their rich and seductive surfaces are the jumping-off point for ideas about flux, change, decay and transformation.

We have expectations about paintings and Joonsung's technique allows these to be confounded. What appears to be a Sargent 'swagger portrait' of an Edwardian society lady becomes a contemporary Korean nude. A sumptuous study of flowers withers and dies in front of us. The sports match reaches a climax. Using the tenets of academic painting and then manipulating them digitally, the artist subverts the viewing process and demands our attention.

Bae Joonsung's paintings slip between worlds. He presents a synthesis of past and present, of reality and artifice, of naked and clothed. The images express the fragmentary and elusive nature of our perceptions. This makes us all the more determined to savour them.



The Costume of Painter – 'The Lady with Dishes' | Lenticular | 2016  
Edition of 10: 120 x 80 cm (47 x 31.5 in)



The Costume of Painter – 'Good to See U' | Lenticular | 2016  
Edition of 13: 80 x 60 cm (31.5 x 23.5 in) | Edition of 10: 106.5 x 80 cm (42 x 31.5 in)  
Edition of 7: 160 x 120 cm (63 x 47 in)

# Pontone

GALLERY

## BAE JOONSUNG

### EDUCATION

B.F.A. College of Fine Arts, Seoul National University, Seoul  
M.F.A. Graduate School of Seoul National University, Seoul

### SOLO EXHIBITIONS

- 2016 The Costume of Painter-Still Life, Art Park, Seoul, Korea  
2015 <BAE JOON SUNG>, Hong Kong Opera Gallery, Hong Kong  
2014 Art Basel Hong Kong, Hong Kong Convention Center, Hong Kong  
The Costume of Painter, Albemarle Gallery, London, UK  
2013 Moving Still Life, Keumsan Gallery, Seoul, Korea  
2012 Moving Still Life, Gallery Ihn, Seoul, Korea  
Moving Still Life, Gallery Touchart, Heyri Art Valley, Korea  
2011 The Costume of Painter – Moving Still Life, Art Seasons, Singapore  
2009 The Costume of Painter, Severance Art Space, Seoul, Korea  
2007 The Museum, Gallery HYUNDAI, Seoul, Korea  
2006 The Costume of Painter, Gallery Touchart, Heyri Art Valley, Korea  
2006 The Costume of Painter, Canvas International Art Gallery, Amsterdam, The Netherlands  
The Costume of Painter, Avenuel Department Store, Seoul, Korea  
2004 The Costume of Painter, Paik Haeyoung Gallery, Seoul, Korea  
2003 The Costume of Painter – Travel with C. Lacroix, Daelim Museum, Seoul, Korea  
2002 The Costume of Painter, Museum of Beaux-Arts in Tours, France  
2000 Naming, Gallery Ihn, Seoul, Korea  
1997 Naming, Sal Gallery, Seoul, Korea  
1996 Impression of Books and Paintings, Kumho Museum of Art, Seoul, Korea

**EXTENSIVE GROUP SHOWS** including Frieze, Art Basel and The Armory Show. Museum and gallery shows across Europe, the USA and Asia.

### AWARDS

- 1995 Grand Prix, Chung Kyungja Art Culture Foundation, Korea  
2000 Young Artist Prix, Ministry of Culture and Tourism, Korea

### COLLECTIONS

National Museum of Art, Korea  
Gyeonggi Museum of Modern Art, Korea  
Seoul Museum of Art, Korea  
Korean Folk Village, Korea  
Severance Hospital, Korea  
BORYUNG Co. Ltd, Korea  
Ocsanga, Korea  
Centre Pompidou, France  
Beaux Art Museum, France



The Costume of Painter – Still Life With Strawberry 3D | Lenticular | 2016  
Edition of 13; 70 x 70 cm (27.5 x 27.5 in)



The Costume of Painter – C. Lacroix Wed 3D | Lenticular | 2015  
Edition of 13; 82.5 x 60 cm (32.5 x 23.5 in) | Edition of 10; 110 x 80 cm (43.5 x 31.5 in)