

Alfredo Roldán A Goddess at my Table

7 – 30 September 2018

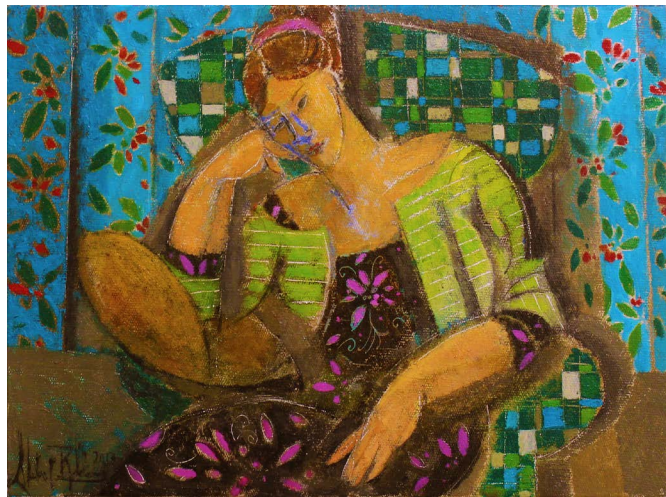
Spanish artist Alfredo Roldán was born in 1965. Self-taught, with no formal training, and determined to be an artist, he initially sold his work in street markets. By the mid 1990s, after winning several competitions, he came to the notice of art galleries in Europe and America, notably The Albemarle Gallery in London. Its new incarnation, Pontone Gallery, is proud to present his latest exhibition.

Roldán's Madrid studio is the heart of his practice. It is not a solitary, exclusive space, but a stage set for human interaction, which allows his models to feel at ease in a comfortable interior. Figures are engaged in the rituals of relaxation, surrounded by the paraphernalia of the table: pots, bottles, vases, flowers and fruit. His compositions evoke a state of pause and tranquility, sustained by simple and everyday pleasures.

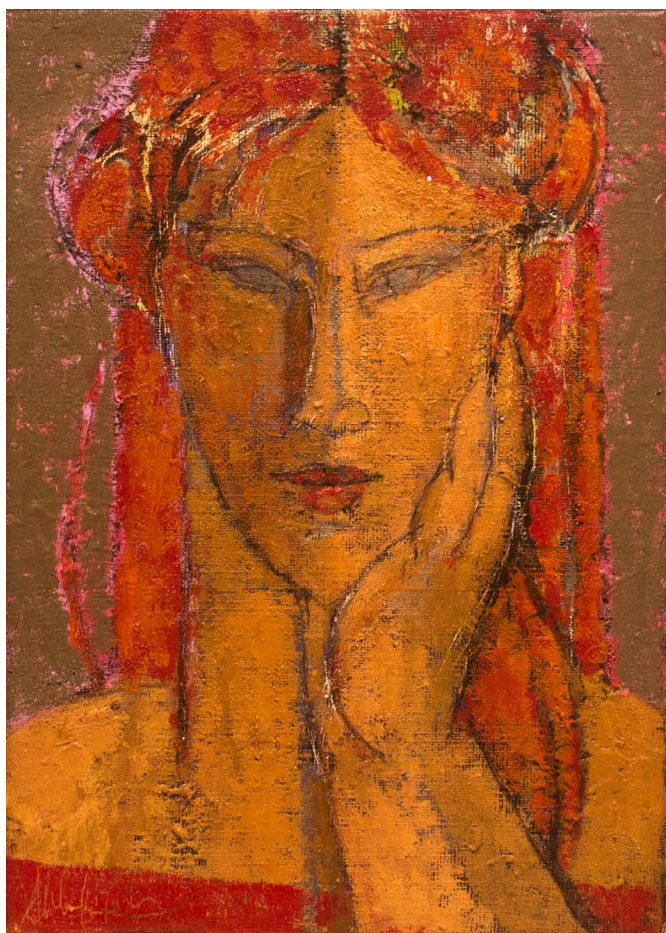
The paintings are sophisticated exercises in sumptuous colour and subtle tonalities. Rich passages of reds, blues and greens are played off against muted, earthy shades and ochre flesh tints. The flattened perspectives, fractured surfaces and graphic stylisations reference the cubism of Picasso and Juan Gris. There are echoes of Modigliani in the treatment of his female subjects and we can detect a homage to his 'heroes', Gauguin and Matisse, in his joyful and sensuous manipulation of colour.

His female subjects are inscrutable, their mask-like faces evoking the Cycladic geometries of ancient goddesses. Their eyes are empty, lacking pupils, heightening a sense of otherness and archaic, mysterious attachments. These enigmatic figures express a theatricality of self-presentation, which is deliberately seductive in its subtle evasion.

Roldán's paintings bask in the heat of Mediterranean sunshine and its associations of carefree delight. He makes a world of visual harmony. His is a sincere appreciation of the simple pleasures of the senses, which he asserts in a suitably stripped-down and shadowless painting language. The surface alone can be profound.



Sesteando | 2017 | Oil on canvas | 16 x 22 cm (6.3 x 8.6 in)



Ojos negros | 2018 | Oil on canvas | 22 x 16 cm (8.6 x 6.3 in)

Pontone

GALLERY

ALFREDO ROLDÁN

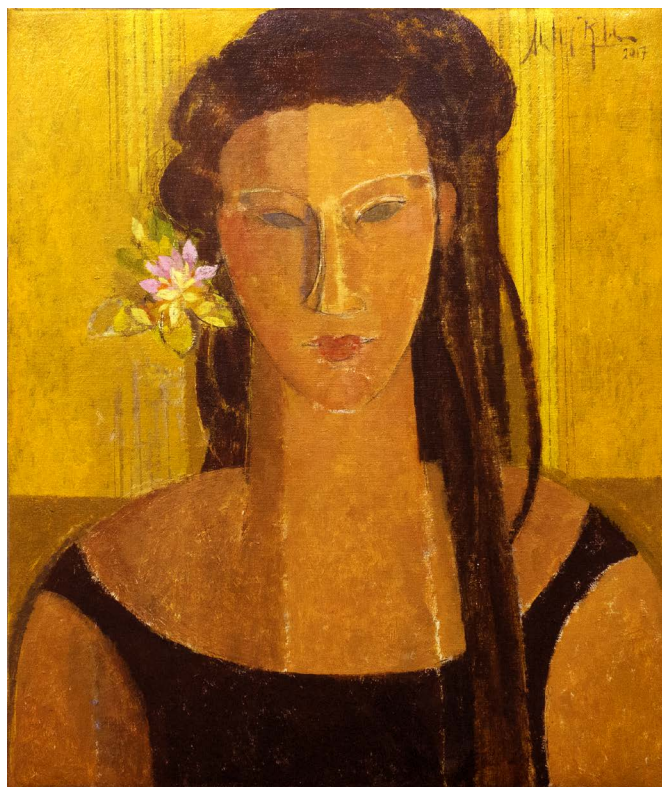
1965 Born in Madrid

SELECTED RECENT EXHIBITIONS

- 2016 Albemarle Gallery, London
- 2015 Grand summer Exhibition, Albemarle Gallery, London
Collectiva de verano, Galeria Bernesga, León
Collectiva de verano, Galeria Mellado, San Lorenzo del Escorial, Madrid
Art Palm Beach, Albemarle Gallery
- 2014 Winter Collective, Albemarle Gallery, London
Spring Collective, Albemarle Gallery, London
Fine Art Asia – Hong Kong, Albemarle Gallery
- 2013 Albemarle Gallery, London
- 2012 Figurative, Galería Puerta de Alcalá'
Nude, Albemarle Gallery
- 2011 Albemarle Gallery, London
Verano, Galería Mellado, San Lorenzo del Escorial, Madrid
Navidad, Galería Mellado, San Lorenzo del Escorial, Madrid
- 2010 Galería CC-22, Madrid
Navidad 2010, Galería Mellado, San Lorenzo del Escorial, Madrid
Figurativa Española, Albemarle Gallery, London
Luz y Color, Galería Mellado, San Lorenzo del Escorial, Madrid
El eterno femenino, Galería Sánchez y Juan, Elche, Alicante
- 2009 Winter Show, Albemarle Gallery, London
Galería Aitor Urdangarin, Vitoria
Summer Show, Albemarle Gallery, London
Verano, Galería CC-22, Madrid
- 2008 Miranda Galleries, Laguna Beach, California
Summer Show, Albemarle Gallery, London
- 2007 Galería CC-22, Madrid
Contemporary Art Exhibition, One Voice, Dubai
Sala Braulio II, Castellón
Albemarle Gallery, London
Galería Aitor Urdangarin, Vitoria
- 2006 Cartel Fine Art, Málaga
Galería Cartel, Granada
La female poser, Sammer Gallery, Puerto Banús, Marbella
- 2005 Albemarle Gallery, London
Galería CC- 22, Madrid
Sammer Gallery, Lanzarote
- 2004 Galería CC-22, Madrid
Sammer Gallery, Puerto Banús, Marbella



Zona privada | 2018 | Oil on canvas | 40 x 81 cm (15.7 x 31.9 in)



Mujer en amarillo | 2017 | Oil on canvas | 46 x 38 cm (18.1 x 15 in)



Interior de día | 2017 | Oil on board | 28 x 34 cm (11 x 13.4 in)